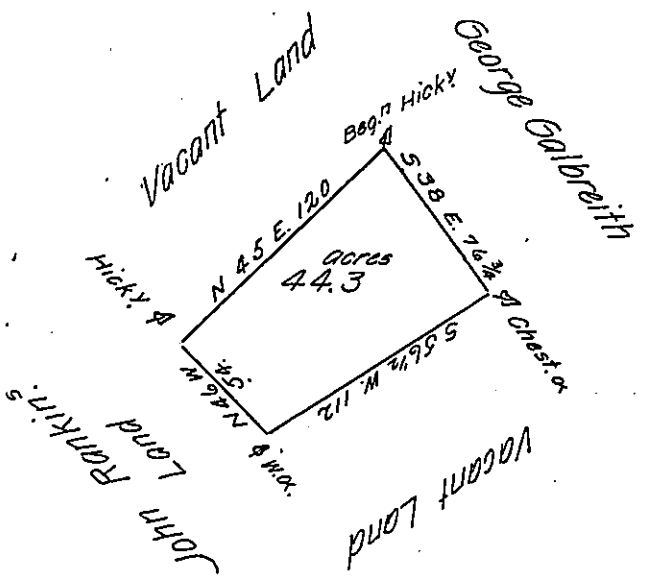


Courses and Distances
 S. 38 E. 76 3/4 }
 S 56 1/2 W. 112. }
 N. 46 W. 54. }
 N. 45 E. 120. }



*The Draught of A Tract of Land Situate in Wayne Township Cumberland County Called
 — Containing forty four Acres and three tenths of an Acre With the Usual Allowance
 of Six per Cent. for Roads &c. Surveyed for John Rankin July 1st 1785 in Pursu-
 ance of a Warrant from the Honourable Vice president of the Supreme Executive
 Council Dated at Philadelphia March 4th 1785.*

Jas Harris

John Lukens Esq. Surv. Gen.

*IN TESTIMONY that the above is a copy of the original remaining on file in
 the Department of Internal Affairs of Pennsylvania, made
 conformably to an Act of Assembly approved the 16th day of
 February, 1833, I have hereunto set my Hand and caused
 the Seal of said Department to be affixed at Harrisburg,
 this twentyfourth day of October 1906.*

Isaac R. Brown
 Secretary of Internal Affairs.